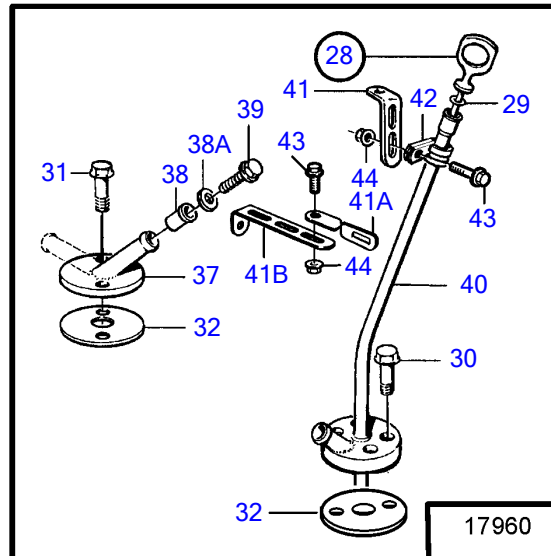
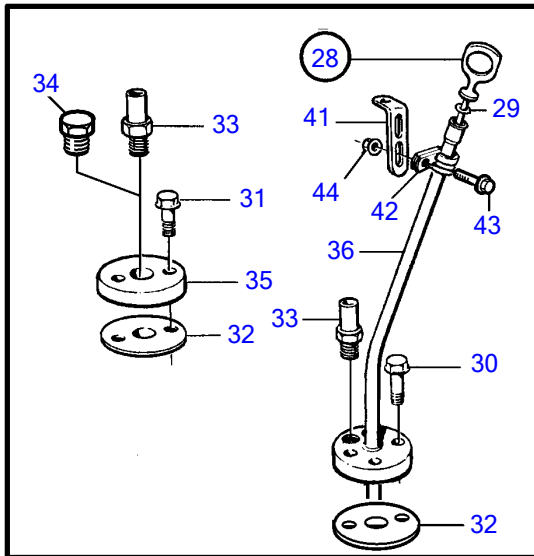
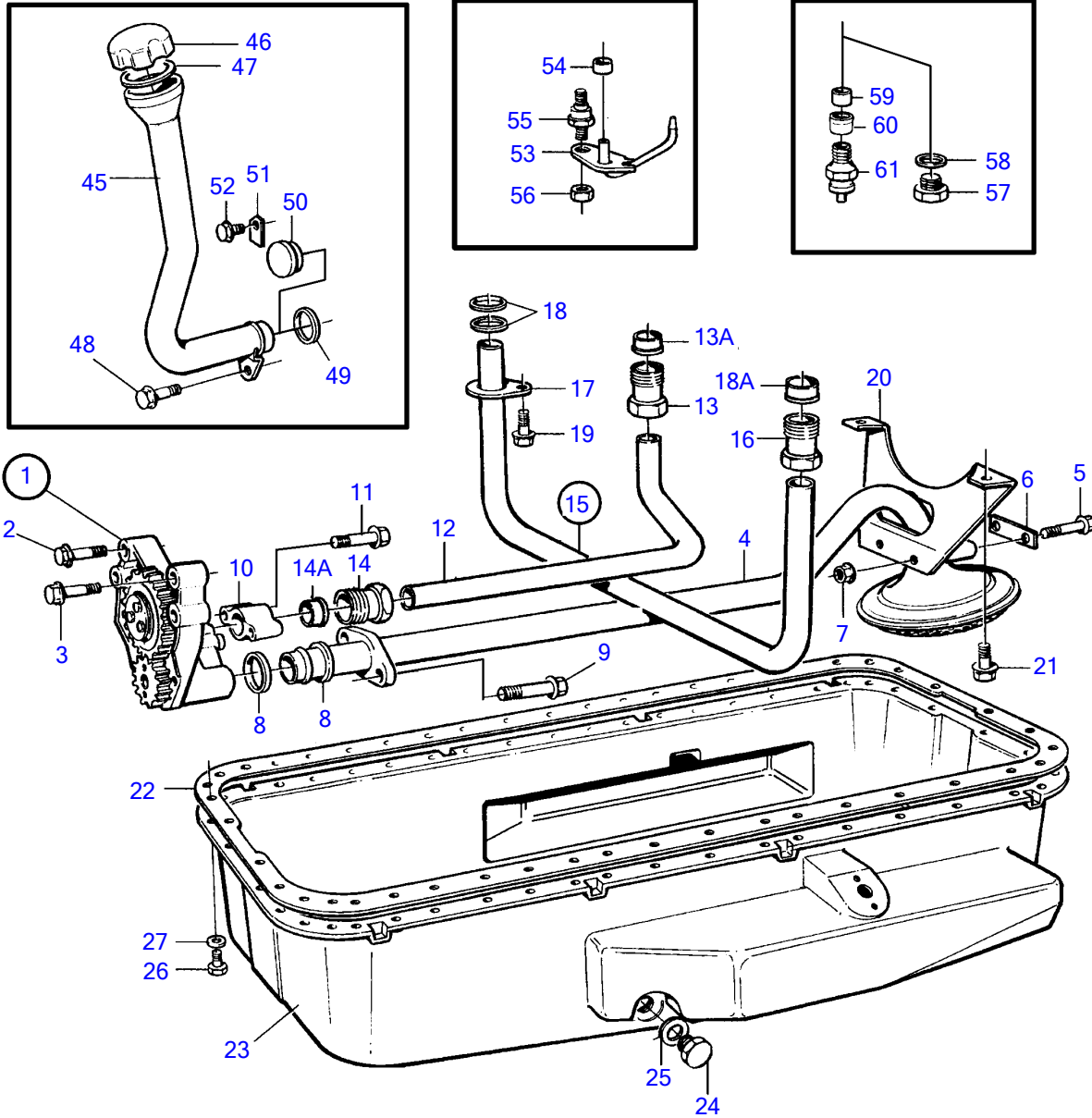


TAMD71B



17960

TAMD71B

REF	PART NO.	QTY	DESCRIPTION	SEE SEC.	NOTES
1	471733	1	Oil pump		SN-XXXXXXXXXX/41796
			•		Replaced by 477547
			•	1036	
	477547	1	Oil pump		SN-XXXXXXXXXX/41796
			•		
			•	1036	
	864760	1	Oil pump		SNXXXXXXXXXX/41797-
			•		
			•	1036	
			•		
			•	1036	
2	471513	4	Screw		
3	471734	2	Screw		
4	847765	1	Suction pipe		SN-XXXXXXXXXX/41796
	864538	1	Suction pipe		SNXXXXXXXXXX/41797-
5	965218	2	Flange screw		
6	421750	1	Square washer		
7	945408	1	Flange nut		
8	470383	2	Sealing ring		
9	965183	2	Flange screw		For 471733,477547
	965184	2	Flange screw		For 864760
10	465846	1	Spacer		
11	968553	2	Flange screw		For 471733,477547
	968999	2	Flange screw		For 864760
12	477947	1	Oil pressure pipe		SN-XXXXXXXXXX/41796
					(471587)
	477948	1	Oil pressure pipe		SNXXXXXXXXXX/41797-
13	471595	1	• Pressure pipe connec		
13A	980786	1	• Ferrule		
14	471588	1	Oil feed pipe		
14A	980786	1	Ferrule		
15	420996	1	Oil pressure pipe, piston cooling		
16	471595	1	• Pressure pipe connec, piston cooling		
17	471746	1	• Clamp		
18	471956	2	• Gasket		
18A	980786	1	• Ferrule		
19	946440	1	Flange screw		
20	847698	1	Bracket		
21	946440	2	Flange screw		
22	11030779	1	Gasket		
23	3827987	1	Crankcase		Later version of the oil sump has no hole for oil draining., (847809)
24	960634	1	Plug		Later version of the oil sump has no hole for oil draining.
25	18677	1	Gasket		Later version of the oil sump has no hole for oil draining.
26	940142	36	Hexagon screw		
27	941907	36	Spring washer		
28	848058	1	Oil dipstick		1 ea is used on WJ., Std
	863166	1	Oil dipstick		For engine inclination over 5°.
29	949187	1	• O-ring		
30	947542	2	Flange screw		L=25mm
32	865385	2	Gasket		
33	192555	1	Nipple		SN-XXXXXXXXXX/46525
34	952075	1	Plug		SN-XXXXXXXXXX/46525
35	863315	1	Flange		SN-XXXXXXXXXX/46525
36	863309	1	Tube		Repl by pipe 864710 (pos 40)., SN-XXXXXXXXXX/46525
37	864707	1	Flange		SNXXXXXXXXXX/46526-
38	843108	1	Bushing		SNXXXXXXXXXX/46526-
38A	940090	1	Washer		SNXXXXXXXXXX/46526-
39	965200	1	Flange screw		SNXXXXXXXXXX/46526-
40	864710	1	Tube		SNXXXXXXXXXX/46526-
41	965558	1	Bracket		
42	952627	1	Clamp		1 ea is used on WJ.

TAMD71B

REF	PART NO.	QTY	DESCRIPTION	SEE SEC.	NOTES
43	946544	1	Flange screw		1 ea is used on WJ.
44	945407	1	Flange nut		1 ea is used on WJ.
45	848581	1	Oil filler pipe		Oil filler pipe 848581, cap 421753 and gasket 940096 are not standard equipment from SNXXXXXXXXXX/66654-
46	421753	1	Oil filler cap		Oil filler pipe 848581, cap 421753 and gasket 940096 are not standard equipment from SNXXXXXXXXXX/66654-
47	1275379	1	Gasket		Oil filler pipe 848581, cap 421753 and gasket 940096 are not standard equipment from SNXXXXXXXXXX/66654-
48	946173	1	Flange screw		
49	421629	1	Sealing ring		
50	848319	1	Plug		Alt
51	848318	1	Anchorage		Alt
52	946440	1	Flange screw		Alt, L=16mm
53	420628	6	Piston cooling jet, piston cooling		
54	466874	6	Sealing ring		
55	471596	6	Stud		
56	948570	6	Lock nut		
57	966146	1	Plug		SN-XXXXXXXXXX/41796
58	947629	1	Gasket		SN-XXXXXXXXXX/41796
59	864531	1	Tube		SNXXXXXXXXXX/41797-
60	980786	1	Ferrule		SNXXXXXXXXXX/41797-
61	864533	1	Reduction valve, piston cooling		SNXXXXXXXXXX/41797-